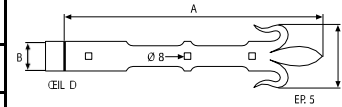
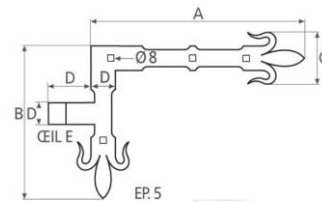


Ref	Designation	Finitions			
		NR	SP	RO	SR
Penture droite					
1210630	Penture 300 x 40 x 5 mm				
1210632	Fausse Penture 300 x 40 x 5 mm				
1210640	Penture 400 x 40 x 5 mm				
1210642	Fausse Penture 400 x 40 x 5 mm				
1210650	Penture 500 x 40 x 5 mm				
1210652	Fausse Penture 500 x 40 x 5 mm				
1210660	Penture 600 x 40 x 5 mm				
1210662	Fausse Penture 600 x 40 x 5 mm				
1210670	Penture 700 x 40 x 5 mm				
1210672	Fausse Penture 700 x 40 x 5 mm				
1210680	Penture 800 x 40 x 5 mm				
1210682	Fausse Penture 800 x 40 x 5 mm				
1210690	Penture 900 x 40 x 5 mm				
1210692	Fausse Penture 900 x 40 x 5 mm				
1210600	Penture 1000 x 40 x 5 mm				
1210602	Fausse Penture 1000 x 40 x 5 mm				

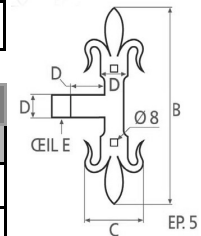


Ref	Designation	Finitions			
		NR	SP	RO	SR
Penture Equerre					
1220630BG	Penture 300/200 x 40 x 5 mm Bas Gauche ou Haut Droit				
1220630HG	Penture 300/200 x 40 x 5 mm Haut Gauche ou Bas Droit				
1220632	Fausse Penture 300/200 x 40 x 5 mm				
1220640BG	Penture 400/250 x 40x 5 mm Bas Gauche ou Haut Droit				
1220640HG	Penture 400/250 x 40 x 5 mm Haut Gauche ou Bas Droit				
1220642	Fausse Penture 400/250 x 40 x 5 mm				

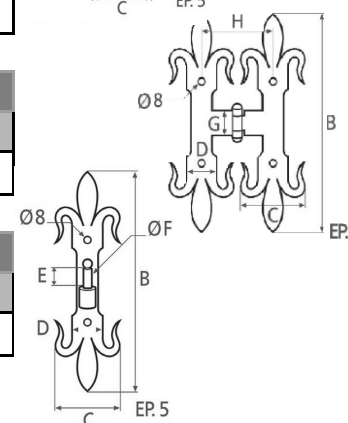


12206

Ref	Designation	Finitions			
		NR	SP	RO	SR
Penture T					
1240620	Penture 250 x 40 x 5 mm				
1240622	Fausse Penture 250 x 40 x 5 mm				



Ref	Designation	Finitions			
		NR	SP	RO	SR
Penture H à charnière					
1250620	Penture 250 x 40 x 5 mm				



Ref	Designation	Finitions			
		NR	SP	RO	SR
Gond sur platine (pentures coudées)					
1290626	Gond 250 x 40 x 5 mm				